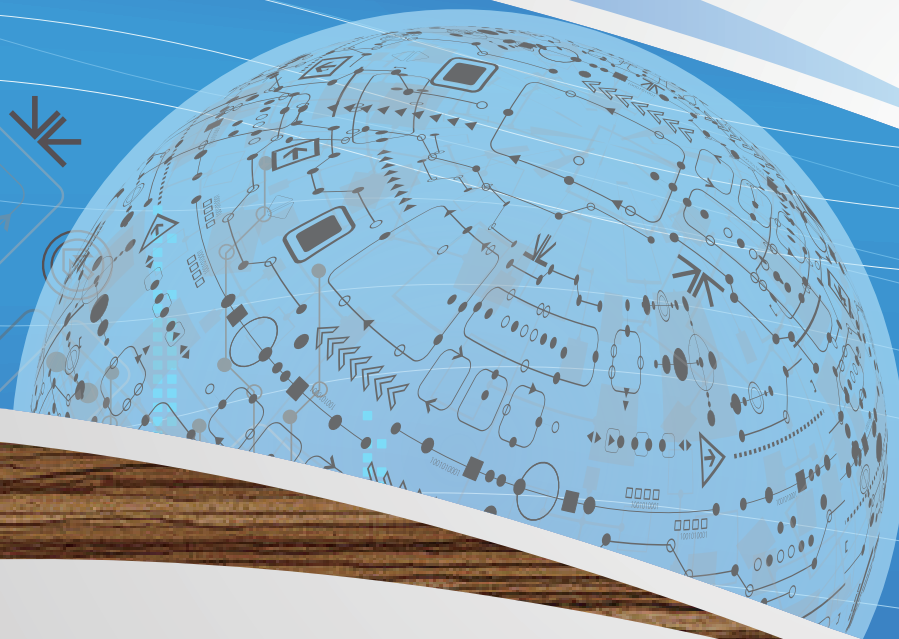




Auto line peeling and lathing machine

全自動原木生產線
防風木機材加工設備



LIH WOEI & SHAPER KING®
利偉木工機械有限公司

📍 台中市豐原區豐勢路二段819巷78-2號
No. 78-2, Lane 819, Sec. 2, Feng Shyh Rd., Feng Yuan 42081, Taiwan

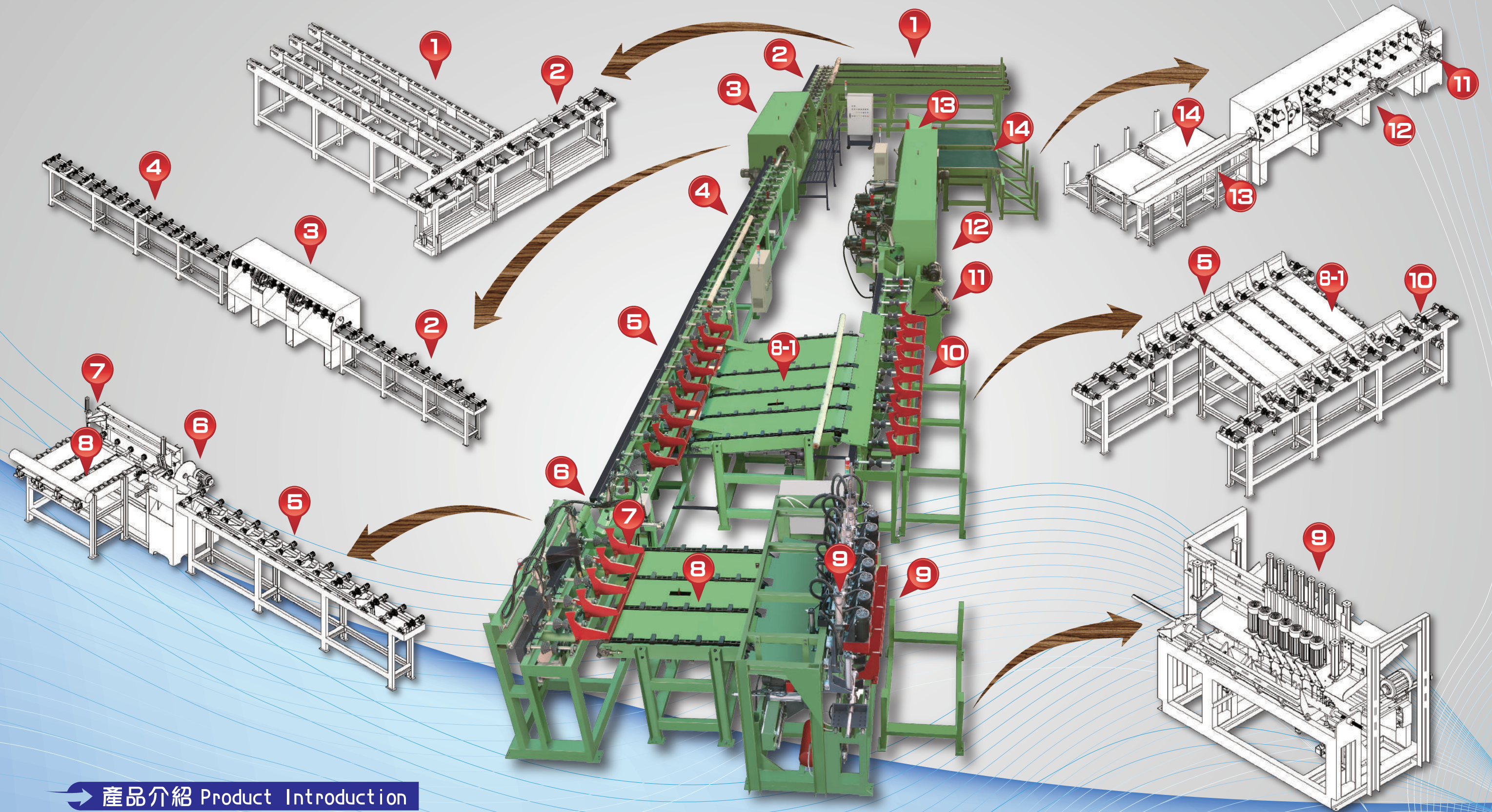
☎ +866-4-25284431 ▪ 25204443 ▪ 25235406

📠 +866-4-25289411 ▪ 25273423

🌐 <http://www.lihwoei.com.tw/> ▪ <http://www.lihwoei.com/>

✉ lihwoei@lihwoei.com.tw ▪ lih-woei@umail.hinet.net





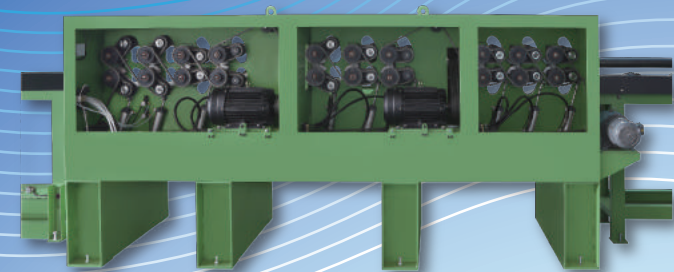
產品介紹 Product Introduction

- 1 原木進料架 5HP*1
In feed shelf of rod round wood 5HP*1
- 2 重型鋼輪進料架 5HP*1
Heavy-duty stainless wheel in feed shelf 5HP*1
- 3 原木加工機 $\phi 80\text{mm} \sim \phi 200\text{mm}$, 馬力 30HP*2PCS; 5HP*1PC
Rod round woodworking machine,
Max diameter/ Min diameter capacity: $\phi 80 / \phi 200$ mm Motor: 30HP*2; 5HP*1
- 4 重型鋼輪輸送架 5HP*1
Heavy-duty stainless wheel of convey: 5HP*1
- 5 重型鋼輪輸送架 + 翻轉架 5HP*1
Heavy-duty stainless of convey + turning wood of shelf 5HP*1
- 6 左右壓料 + 靠料定長 + 10HP馬力切斷機
Right - Left sides press feed + follower wheel set size + Cutting machine 10HP

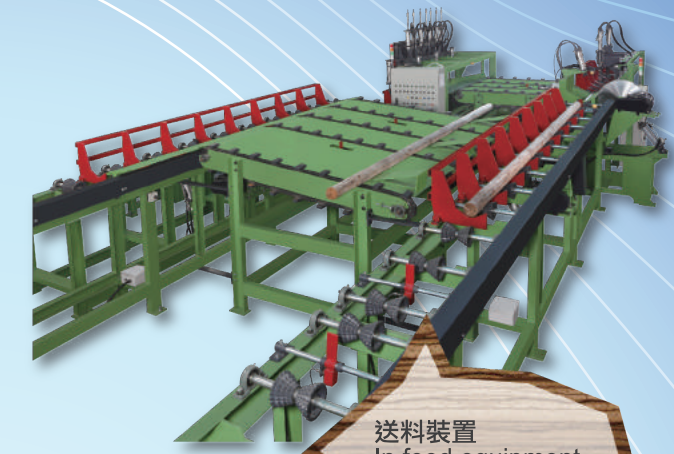
- 7 重型鋼輪 + 定長機構 + 翻轉架 5HP*1
Heavy-duty stainless wheel + set length equipment + turning wood shelf: 5HP*1
- 8 鍊條式連接架 5HP*1
Chain type of connect shelf 5HP*1
- 8-1 鍊條式連接架 5HP*1
Chain type connected shelf: 5HP*1
- 9 鑽孔機上鑽7孔 2HP*7 + 水平2孔 3HP*2 + 下鑽2孔 3HP*1 + 翻轉出料裝置
Boring machine: Upper 7 boring heads (2HP*7PCS) + Horizontal 2 boring heads (3HP*2PCS) + Lower boring 2 heads (3HP*1) + Out feed of turning wood equipment
- 10 重型鋼輪輸送架 + 出料翻轉架 5HP*1
Heavy-duty stainless wheel of convey + Out feed turning wood shelf 5HP*1
- 11 左右壓料 + 靠料定長 + 10HP馬力切斷機
R-L sides press feed + follower feed set length + Cutting machine 10HP

- 12 水平鑽孔 馬力3HP + 進料鋼輪 + 上下鋸馬力: 10HP*2PCS
Horizontal Boring 3HP + In feed stainless wheel + Upper- Lower cutting machine 10HP*2PCS
- 13 出料輸送架 + 控料機構 1HP*1
Out feed convey + Lock feed equipment: 1HP
- 14 雙帶出料輸送架 5HP*1
Double belts of out feed convey 5HP*1

START



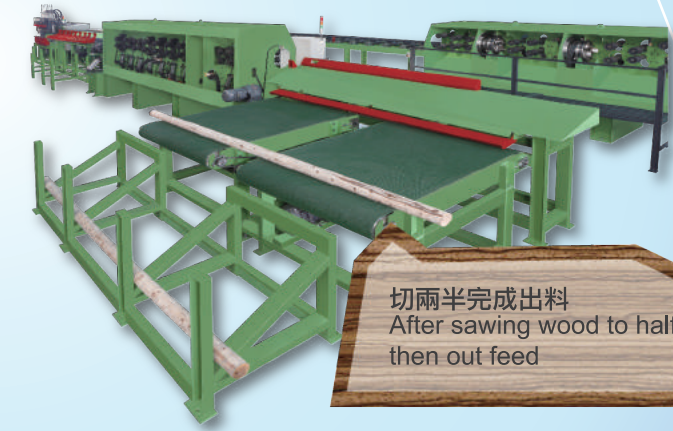
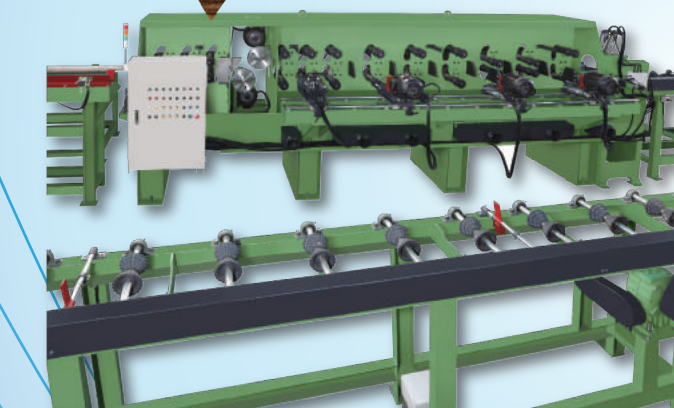
原木自動進料至原木加工機
第1支刀剝皮, 第2刀車圓做細加工
Auto. in feed rod round wood to machine
1st cutter peels rod round wood, 2nd cutter cutting wooden to round and tiny working



送料裝置
In feed equipment



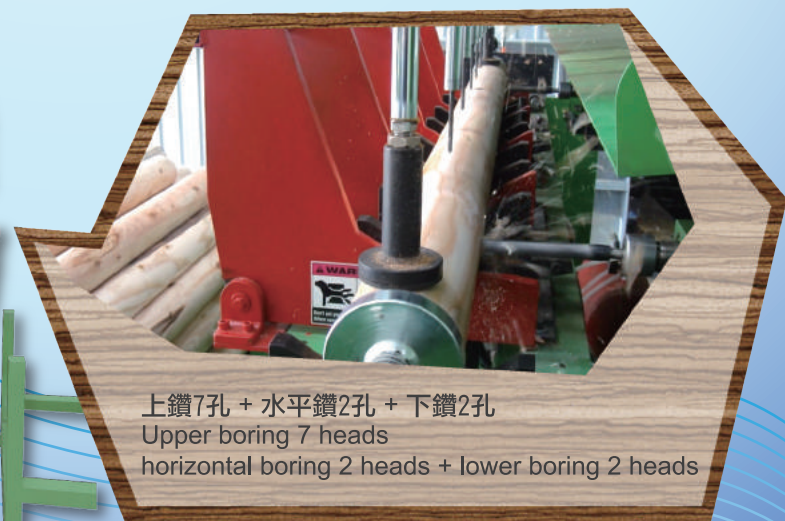
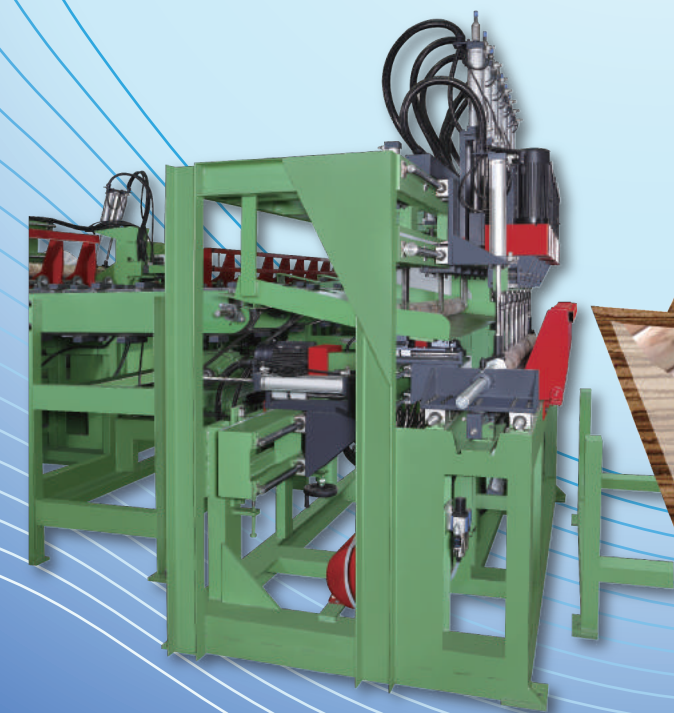
切頭尾 + 切長度 + 3孔水平鑽完成前進上下鋸切兩半
Cutting two edged + length cutting + 3 heads horizontal boring and forward upper-lower
Sawing wooden to half



切兩半完成出料
After sawing wood to half then out feed



FINISH



上鑽7孔 + 水平鑽2孔 + 下鑽2孔
Upper boring 7 heads
horizontal boring 2 heads + lower boring 2 heads